

Name of premises **TREDI RESIDENCIA EBISU #801**

Type **Apartment**

Address **2-4-4, Ebisuminami, Shibuya-Ku, Tokyo**

Transportation **4 min. to Ebisu sta. JR/Hibiya Line
9 min. to Daikanyama sta. Toyoko Line
18 min. to Meguro sta. JR/Mita Line**

Rent **385,000 yen**

Deposit **2 months**

Key money **1 month**

Room type **2 bed rooms**

Floor space **68.26m²**

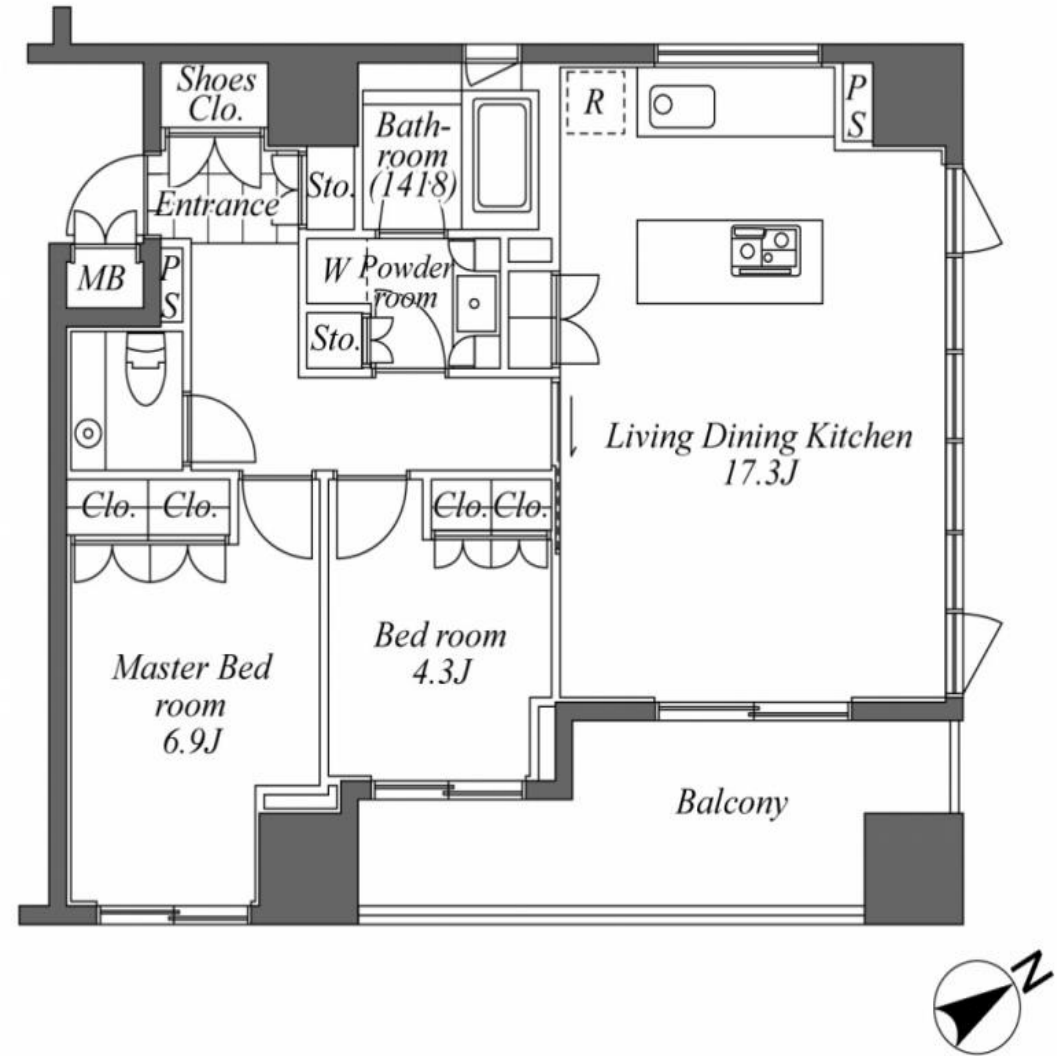
Completion **2008**

Parking **45,000 yen +Tax**

Appliances **A/C, BS, CS, dish washer**

Availability **20th of Dec.**

Others **renewal fee 1 month**



PECS CO., Ltd.

Tokyo Governor License N. (7) 63250

TEL : 03-3423-3330 FAX : 03-3423-0555

Mikawadai Heights 1F, Roppongi 4-3-6, Minato-ku , Tokyo 106-0032