

Name of premises **TRE DI RESIDENCIA EBISU #507**

Type **Apartment**

Address **2-4-4, Ebisuminami, Shibuya-Ku, Tokyo**

Transportation **4 min. to Ebisu sta. Yamanote Line**
9 min. to Daikanyama sta. Toyoko Line

Rent **260,000 yen**

Deposit **2 months**

Key money **1 month**

Room type **1 bed room**

Floor space **41.21m²**

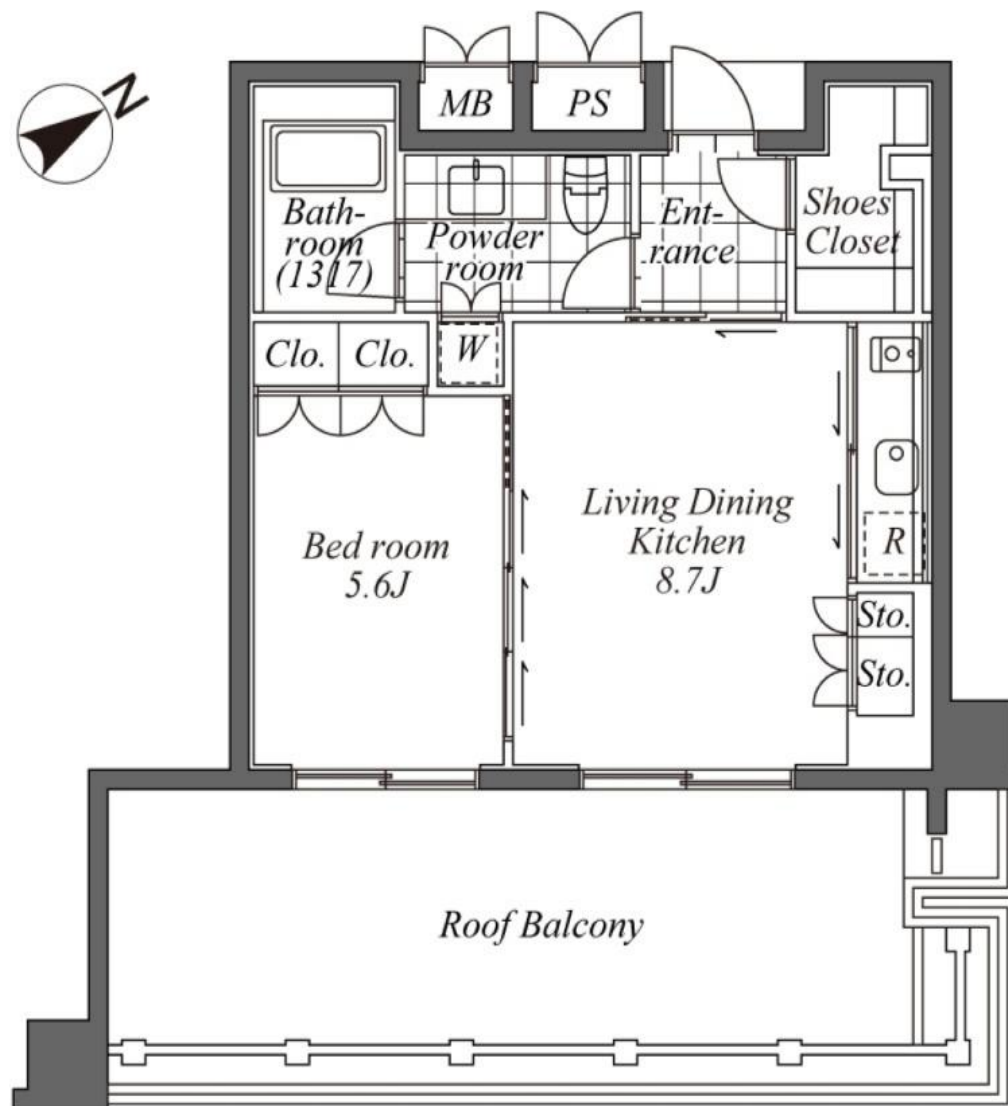
Completion **2008**

Parking **45,000 yen ~48,000 yen + tax**

Appliances **A/C, BS, CS, SECOM**

Availability **Now**

Others **renewal fee 1 month**
Trunk room 3,000 yen + tax



PECS CO., Ltd.

Tokyo Governor License N. (7) 63250

TEL : 03-3423-3330 FAX : 03-3423-0555

Mikawadai Heights 1F, roppongi 4-3-6, Minato-ku , Tokyo 106-0032