

Name of premises **TRE DI RESIDENCIA EBISU #1401**

Type **Apartment**

Address **2-4-4, Ebisuminami, Shibuya-Ku, Tokyo**

Transportation **4 min. to Ebisu sta. Yamanote Line  
9 min. to Daikanyama sta. Toyoko Line**

Rent **690,000 yen**

Deposit **2 months**

Key money **1 month**

Room type **2 bed rooms**

Floor space **115.3m<sup>2</sup>**

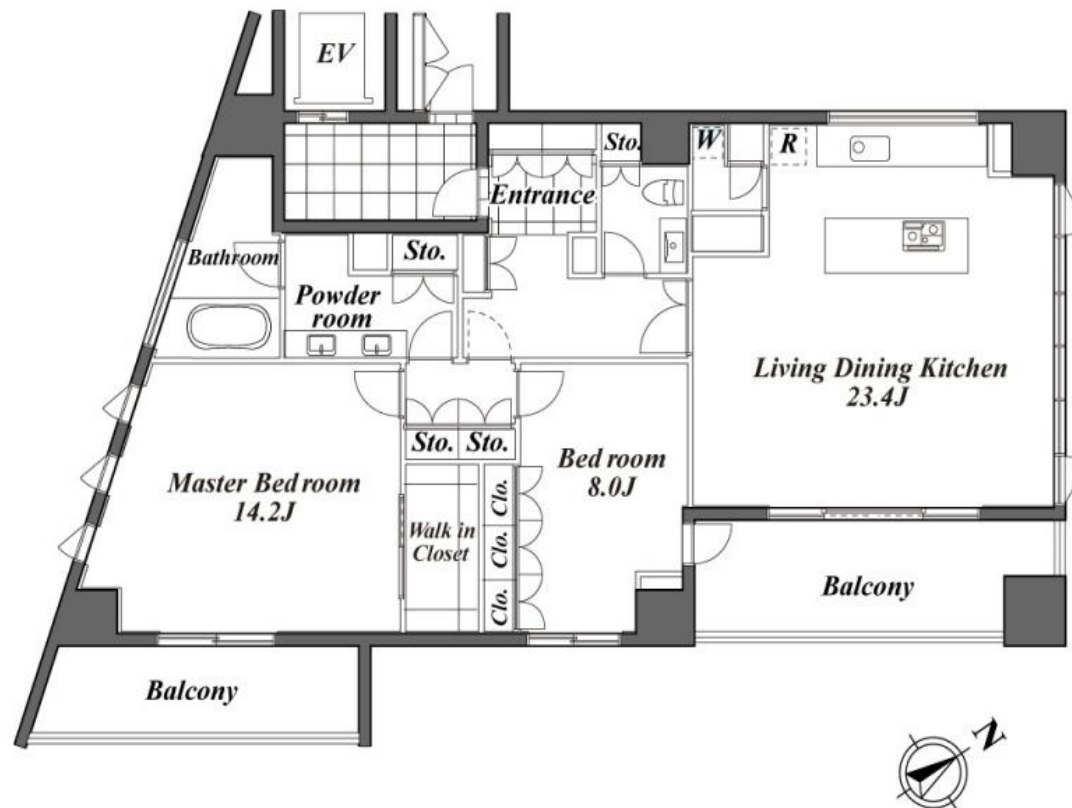
Completion **2008**

Parking **45,000 yen ~48,000 yen + tax**

Appliances **A/C, BS, CS, SECOM, trunk room, dish washer**

Availability **25th of May**

Others **renewal fee 1 month**



PECS CO., Ltd.

Tokyo Governor License N. (7) 63250

TEL : 03-3423-3330 FAX : 03-3423-0555

Mikawadai Heights 1F, roppongi 4-3-6, Minato-ku , Tokyo 106-0032