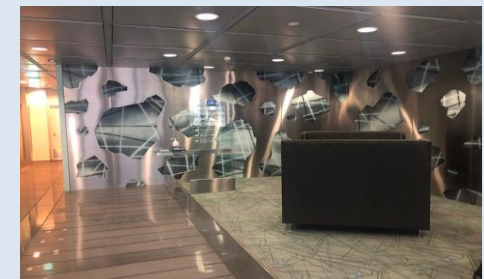
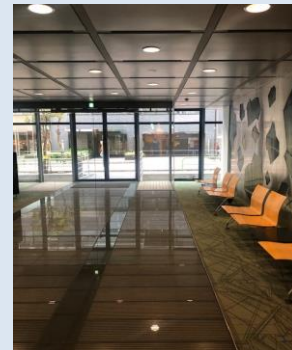
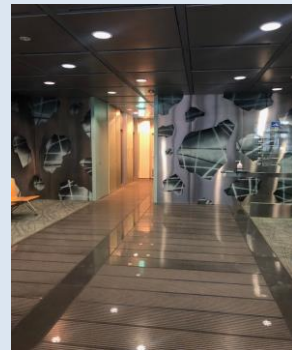
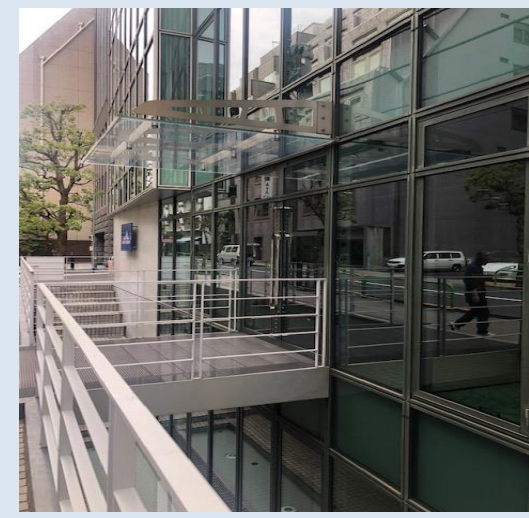


Building Name	SAINT GOBAIN BLDG. 6F, 7F
Type	Office
Address	3-7, Kojimachi, Chiyoda-Ku, Tokyo
Transportation	2min. To Hanzomon sta. Hanzomon Line 3min. To Kojimachi sta. Yurakucho Line
Rent	¥20,500/tsubo (Tax Included)
Common charge	Included
Another Cost	
Deposit	10 months
Parking	Available
Floor space	6F→207.20㎡(62.67tsubo), 7F→182.60㎡(55.23tsubo)
Completion Date	1999
Available	June 2021

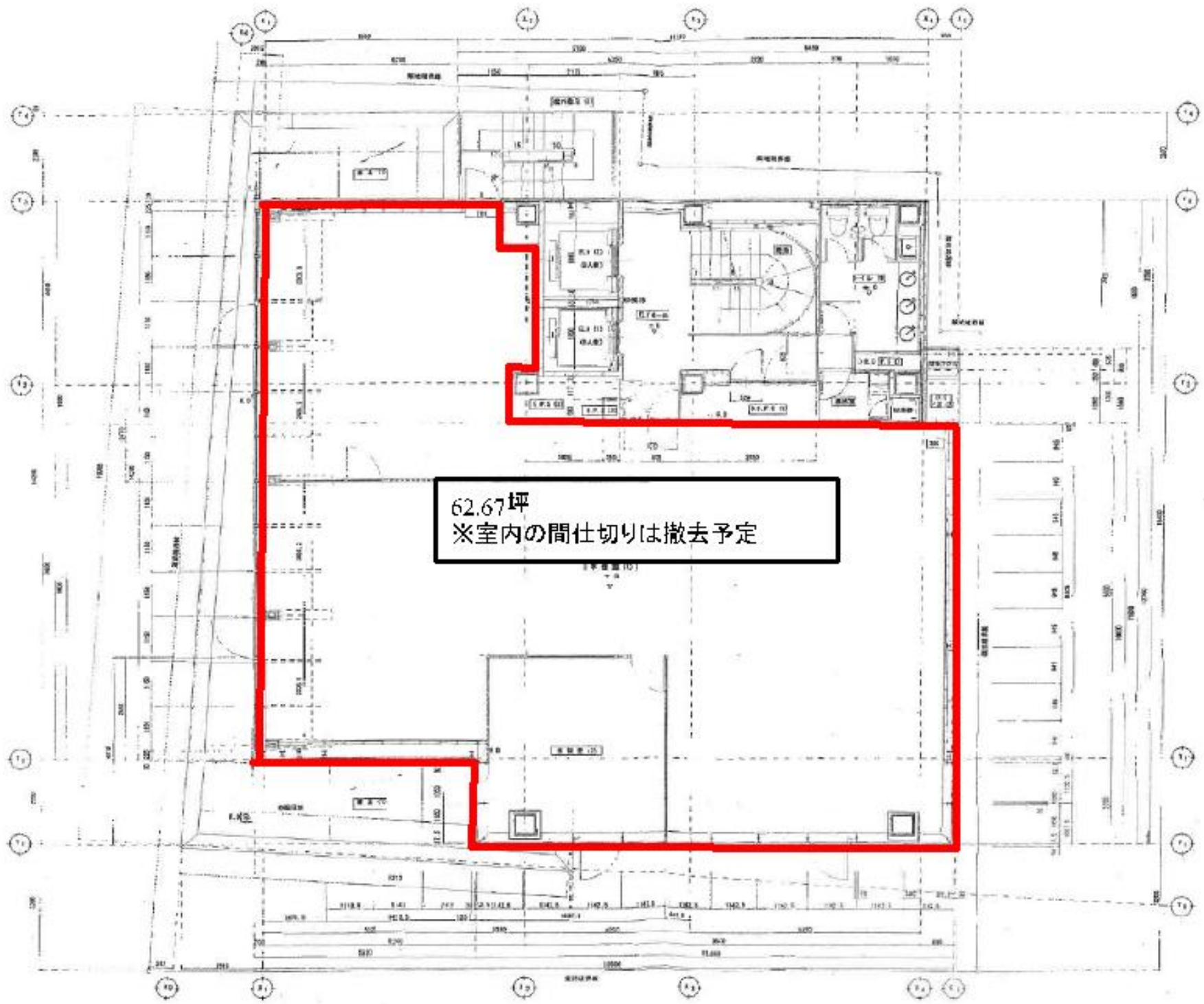


PECS CO., Ltd. TEL : 03-3423-3330

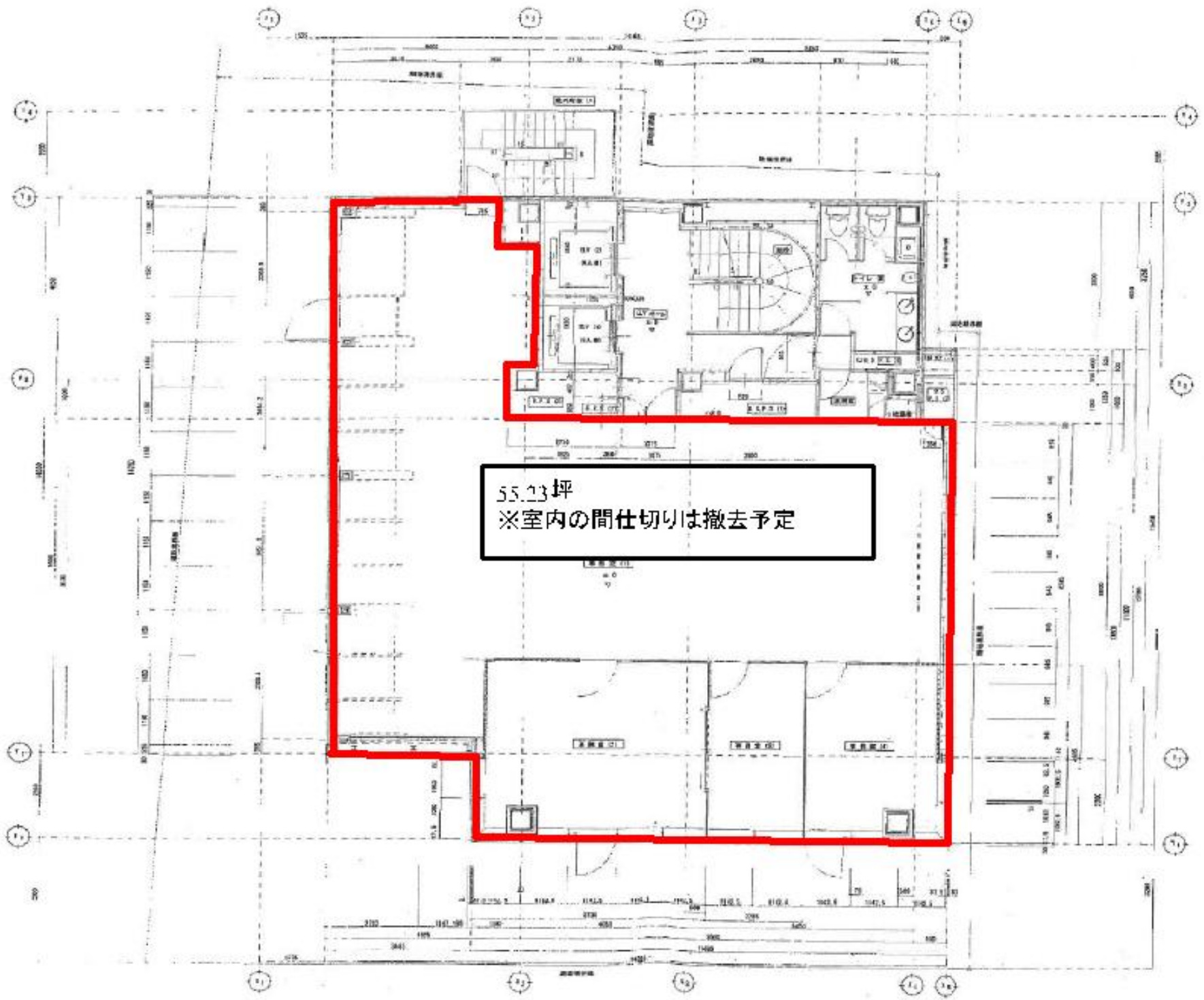
Person/charge: HOCHSTER Tel: 090-2569-2462

Tokyo Governor License N. (7) 63250

Mikawadai Heights 1F, roppongi 4-3-6, Minato-ku , Tokyo 106-0032



62.67坪
※室内の間仕切りは撤去予定



55.23坪
※室内の間仕切りは撤去予定