

Name of premises **PRIME GARDEN NISHI-AZABU #402**

Type **Apartment**

Address **2-5-3, Nishi-Azabu, Minato-Ku, Tokyo**

Transportation **9 min. to Nogizaka sta. Mita Line**  
**11 min. to Omotesando sta. Choyoda/Hanzomon/Ginza Line**  
**15 min. to Roppongi sta. Hibiya/Oedo Line**

Rent **408,000 yen**

Deposit **2 months**

Key money **0 month (until end of Nov.)**

Room type **2 bed rooms**

Floor space **71.72m<sup>2</sup>**

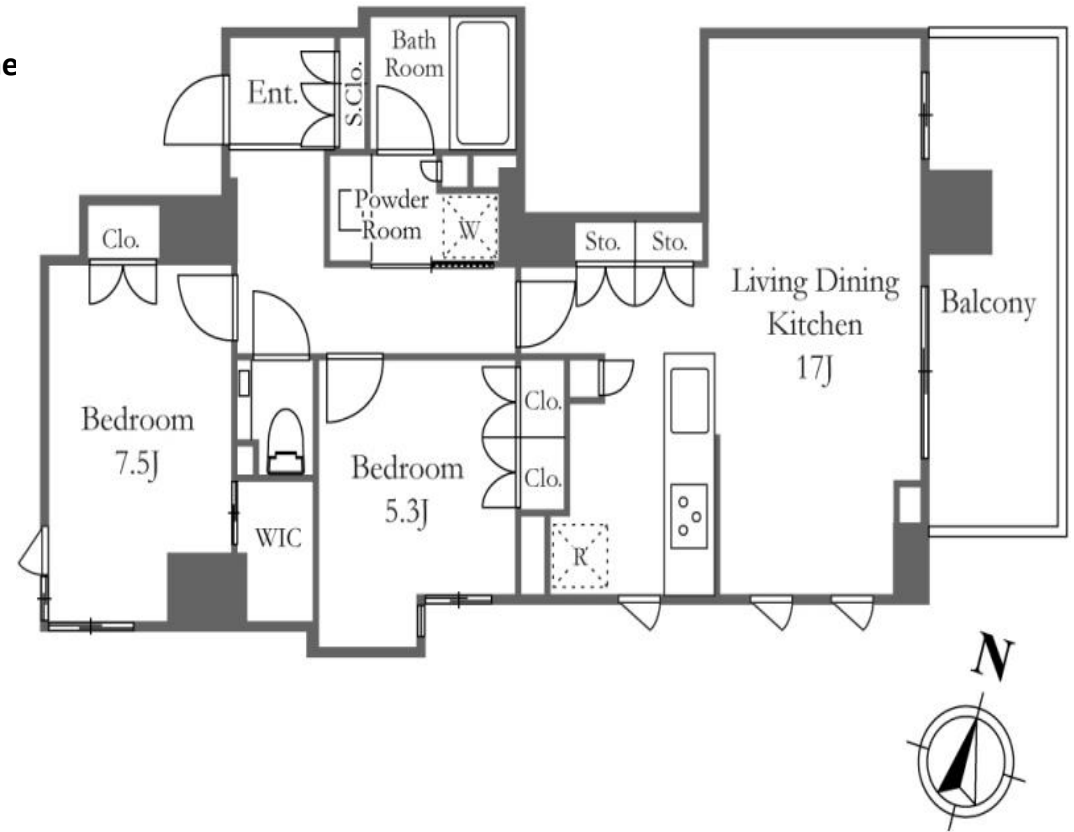
Completion **2019**

Parking **40,000 yen +Tax**

Appliances **A/C, CATV, BS, CS, dish washer, floor heating**

Availability **Now**

Others **renewal fee 1 month**



PECS CO., Ltd.

Tokyo Governor License N. (7) 63250

TEL : 03-3423-3330 FAX : 03-3423-0555

Mikawadai Heights 1F, Roppongi 4-3-6, Minato-ku , Tokyo 106-0032