

Name of premises **PALACIO AOYAMA #402**

Type **Apartment**

Address **3-6-10, Kita-Aoyama, Minato-Ku, Tokyo**

Transportation **1 min. to Omotesando sta. Ginza/Hanzomon/Chiyoda Line**  
**8 min. to Meijijingumae sta. Fukutoshin/Chiyoda Line**  
**11 min. to Gaienmae sta. Ginza Line**

Rent **330,000 yen**

Deposit **2 months**

Key money **1 month**

Room type **1 bed room**

Floor space **48.66㎡**

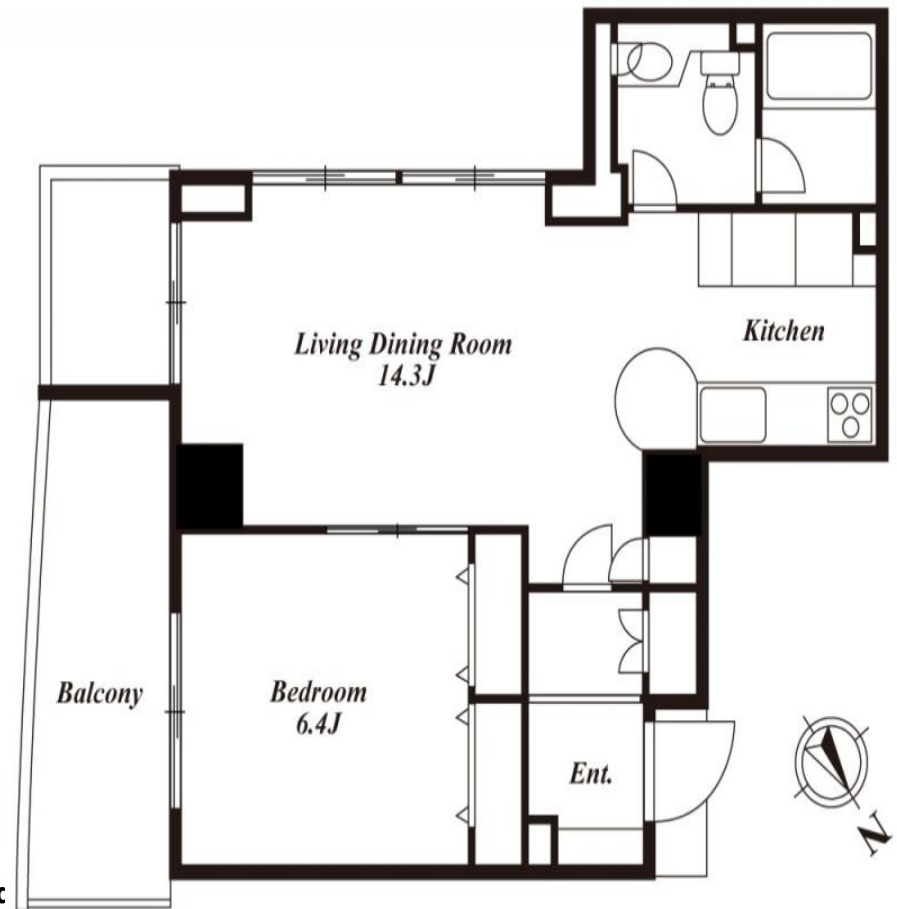
Completion **1999**

Parking **55,000 yen**

Appliances **A/C, CS, micro wave, Oven, dish washer, refrigerator, washer, c**

Availability **30th of June**

Others **3 years fixed term contract**



PECS CO., Ltd.

Tokyo Governor License N. (7) 63250

TEL : 03-3423-3330 FAX : 03-3423-055

Mikawadai Heights 1F, roppongi 4-3-6, Minato-ku , Tokyo 106-0032