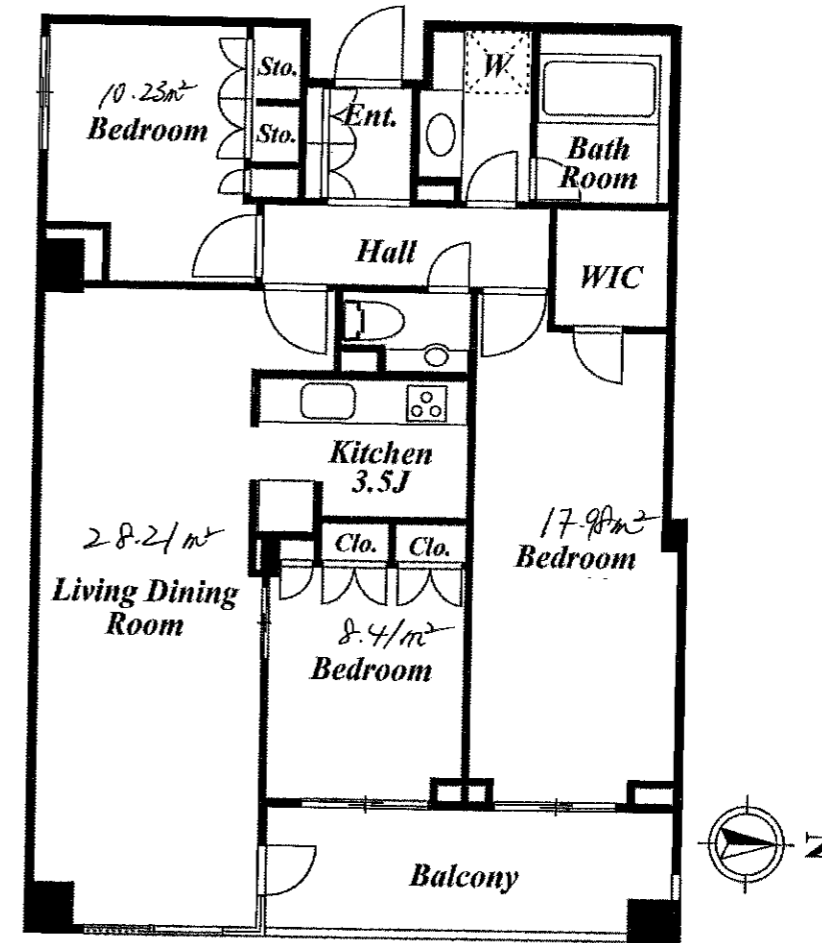


NAME OF PREMISES : COSMO LEAD MINAMIAZABU #202
 TYPE : Apartment
 ADDRESS : 2-9-40, Minamiazabu, Minato-ku
 TRANSPORTATION : 13 min. to Azabujuban sta. Nanboku/ Oedo Line
 9 min. to Shiroganetakanawa sta. Nanboku/Mita Line
 RENT : ¥430,000
 DEPOSIT : 2 months
 KEY MONEY : 0 months (until end of June)
 ROOM TYPE : 3 bedrooms
 FLOOR SPACE : 92.72m²
 COMPLETION DATE : 2007
 PARKING : ¥54,000
 APPLIANCES : A/C, CATV, washer/dryer, dishwasher
 internet, micro wave
 AVAILABLE : 31st of July
 OTHERS : renewal fee 1 month
 Pet negotiable
 New Key charge ¥15,000+Tax



PECS CO., Ltd. TEL : 3423-3330 FAX : 3423-0555
 License NO. (6) 63250 MIKAWADAI HEIGHTS, 4-3-6, ROPPONGI, MINATO-KU
 A COMPREHENSIVE REAL ESTATE AGENCY SERVING THE FOREIGN COMMUNITY