

Name of premises **CITY TOWER YOTSUYA #1402**

Type **Apartment**

Address **1-8, Funamachi, Shinjuku-Ku, Tokyo**

Transportation **1 min. to Yotsuya 3-chome sta.
on Marunouchi Line**

Rent **260,000 yen (common charge incl.)**

Deposit **2 months**

Key money **2 months**

Room type **1 bed room**

Floor space **56.62㎡**

Completion **2004**

Parking **40,000 yen~42,000 yen**

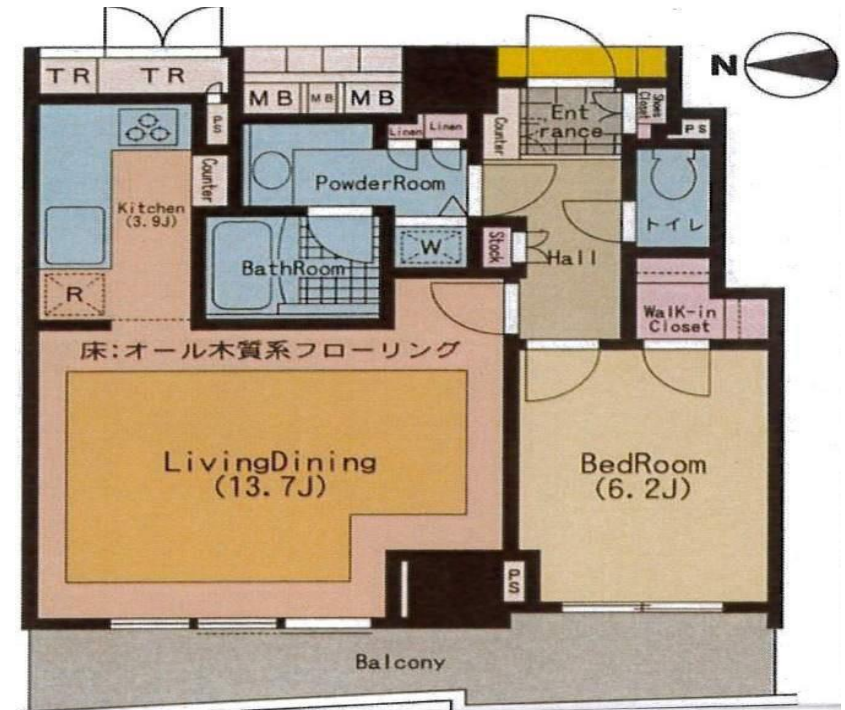
Appliances **A/C**

Availability **Now**

Others **renewal fee 1 month
trunk room 5,000 yen
Free access to Sky lounge, internet incl.**



If lease agreement signed before December 15th, 1 month of free rent



PECS CO., Ltd.

Tokyo Governor License N. (7) 63250

TEL : 3423-3330 FAX : 3423-0555

Mikawadai Heights 1F, roppongi 4-3-6, Minato-ku , Tokyo 106-0032