

Name of premises **CHIDORIGAFUCHI HOUSE #601**

Type **Apartment**

Address **2-2, Sanbancho, Chiyoda-Ku**

Transportation **8 min. to Hanzomon sta. Hanzomon Line**
10 min. to Kudanshita sta. Hanzomon Line
15 min. to Ichigaya sta. JR Line

Rent **¥1,220,000**

Deposit **3 months**

Key money **None**

Room type **3 bedrooms**

Floor space **195.47m²**

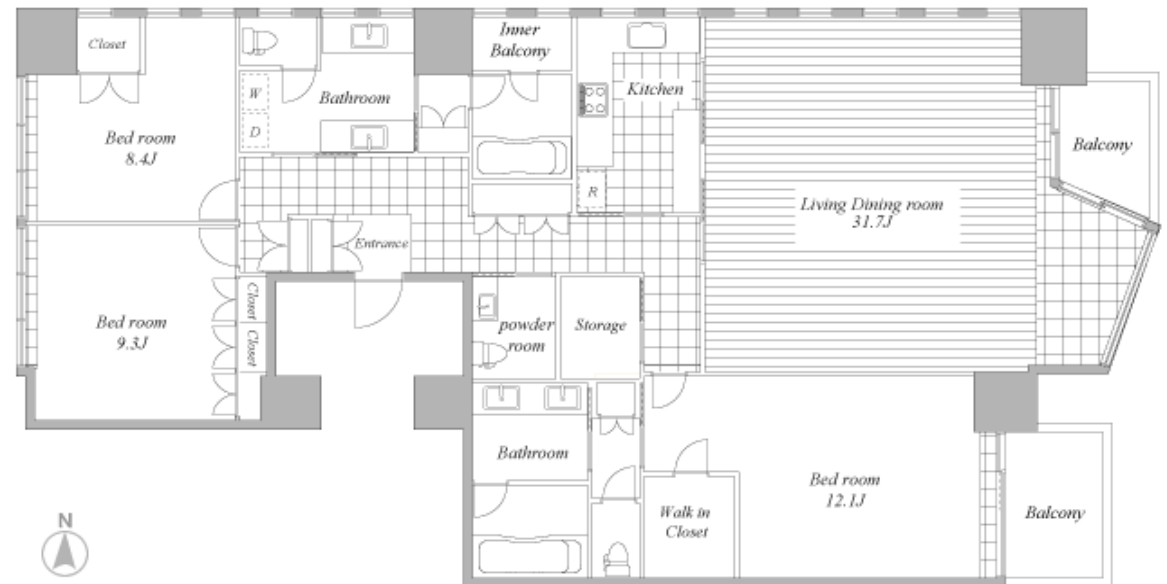
Completion **2007**

Parking **¥51,840**

Appliances **A/C, BS, CS, washer, dryer, oven, dish washer, internet**
SECOM, trunk room

Availability **Now**

Others **4 years fixed term contract**



PECS CO., Ltd.

TEL : 3423-3330 FAX : 3423-0555

Tokyo Governor License N. (6) 63250

Mikawadai Heights 1F, roppongi 4-3-6, Minato-ku , Tokyo 106-0032