

Name of premises **CHIDORIGAFUCHI HOUSE #505**

Type **Apartment**

Address **2-2, Sanbancho, Chiyoda-Ku, Tokyo**

Transportation **8 min. to Hanzomon sta. Hanzomon Line  
10 min. to Kudanshita sta. Hanzomon Line  
15 min. to Ichigaya sta. JR Line**

Rent **780,000 yen**

Deposit **3 months**

Key money **0 months**

Room type **1 bed room + Study room**

Floor space **120.62m<sup>2</sup>**

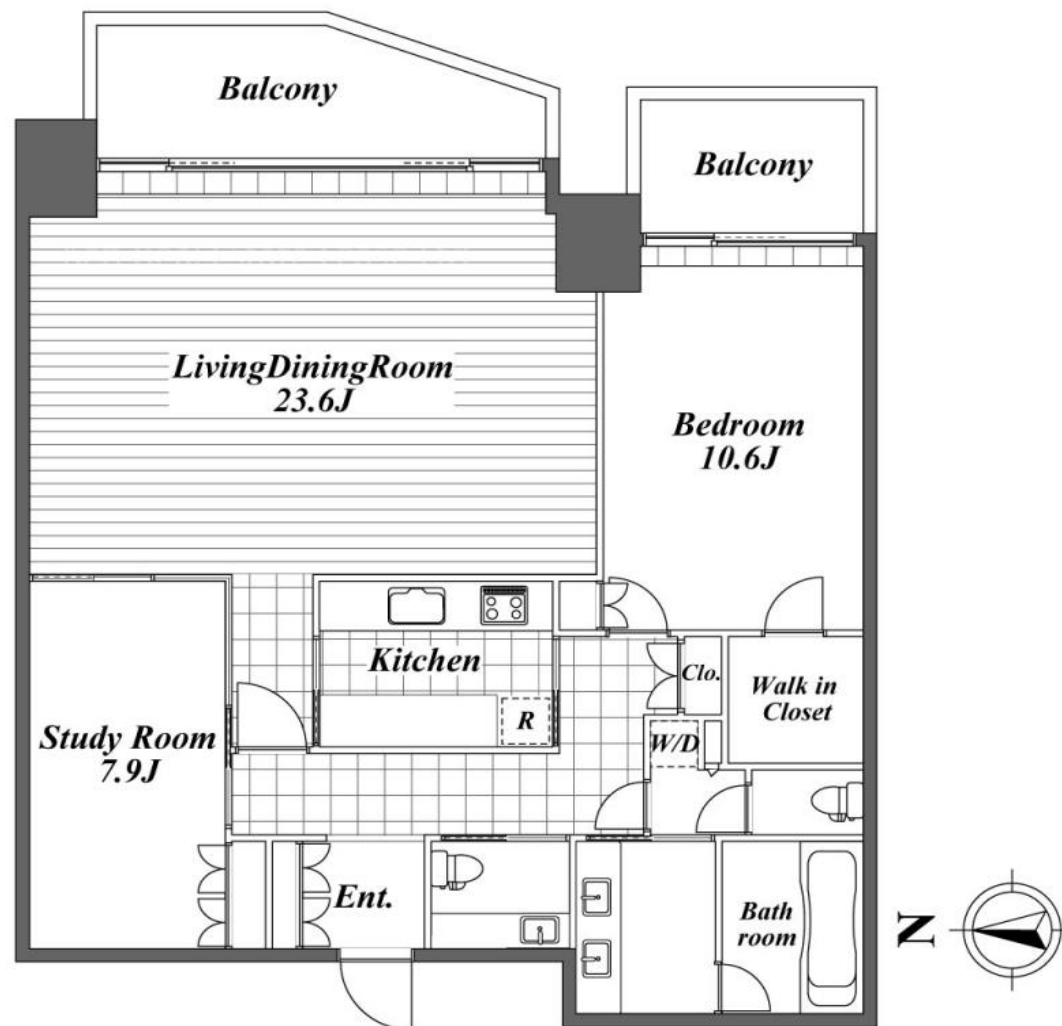
Completion **2007**

Parking **48,000 yen +Tax**

Appliances **A/C, BS, CS, dish washer, washer, dryer**

Availability **Now**

Others **4 years fixed term contract  
Trunk room ¥10,000+Tax/month**



PECS CO., Ltd.

Tokyo Governor License N. (7) 63250

TEL : 03-3423-3330 FAX : 03-3423-0555

Mikawadai Heights 1F, Roppongi 4-3-6, Minato-ku , Tokyo 106-0032